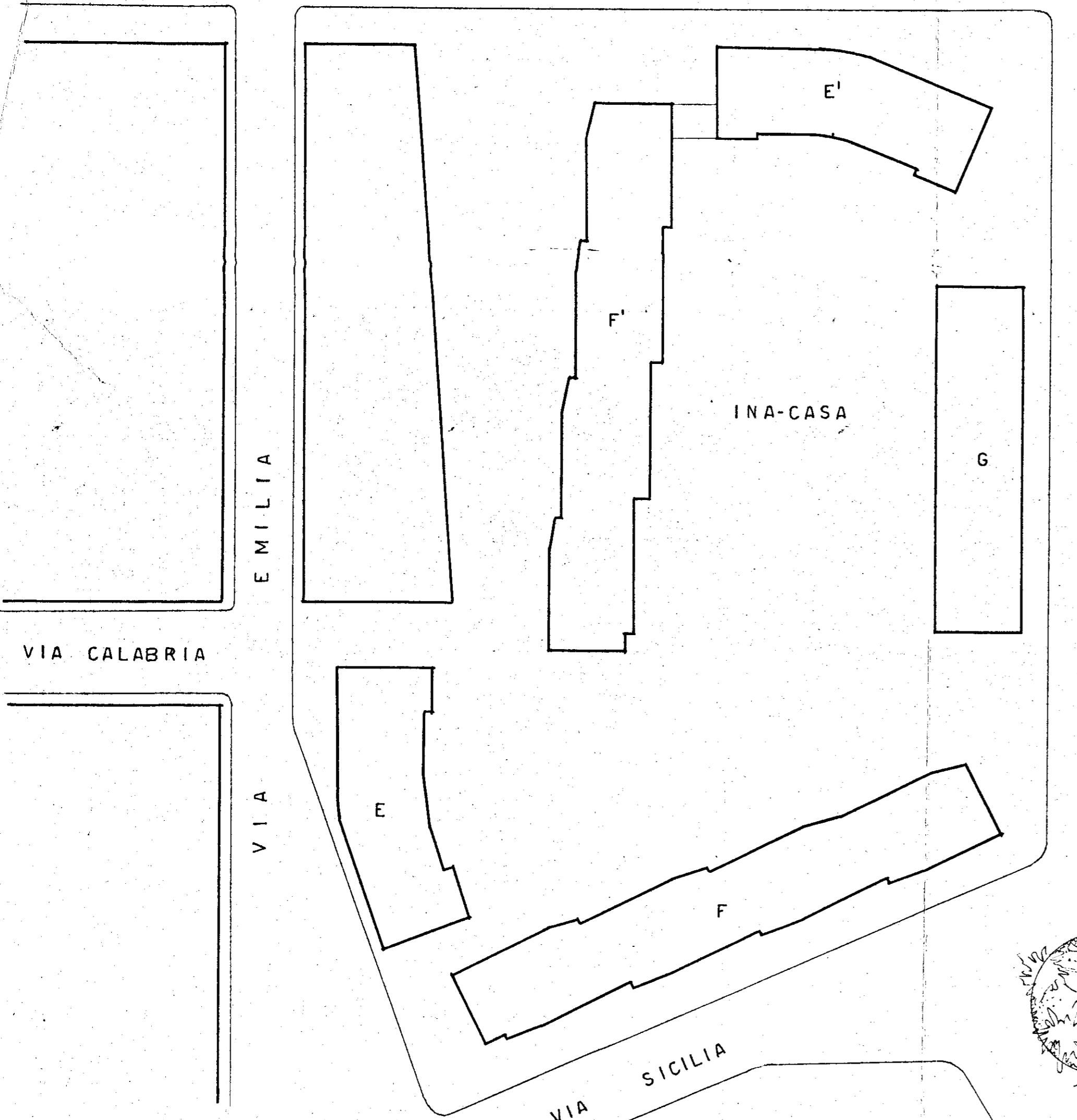
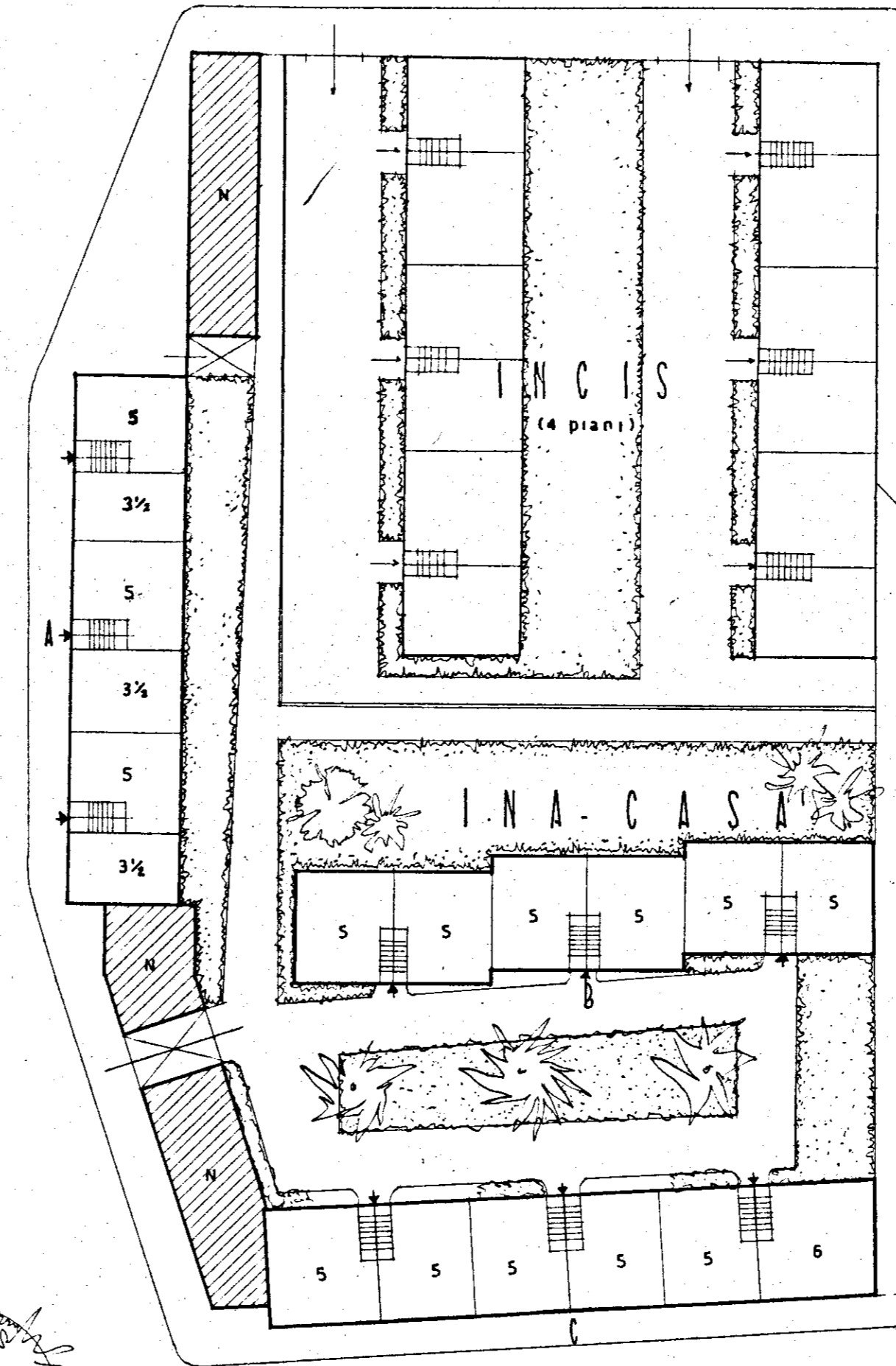


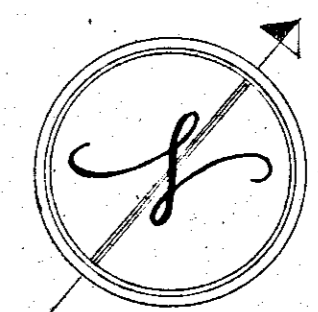
VIA CALABRIA



VIA COMMENDA



A	=	3 piani	-	vani n°	76,5
B	=	4	"	"	120
C	=	3	"	"	93
TOTALE VANI n°					289,5



1/A

INA-CASA
 APPROVATO
 3-MAR-1954

ISTITUTO CASE POPOLARI - BRINDISI		PROF. 3087
INA CASA	QUARTIERE COMMENDA	DATA nov. 1953
VISTO	SISTEMAZIONE LOTTO PIANO ASSESTAMENTO	REV. marzo 1954
STUDIO ARCH. GAETANO MINNUCCI - ROMA VIA DELLE FORNACI, 43		SCALA 1:500