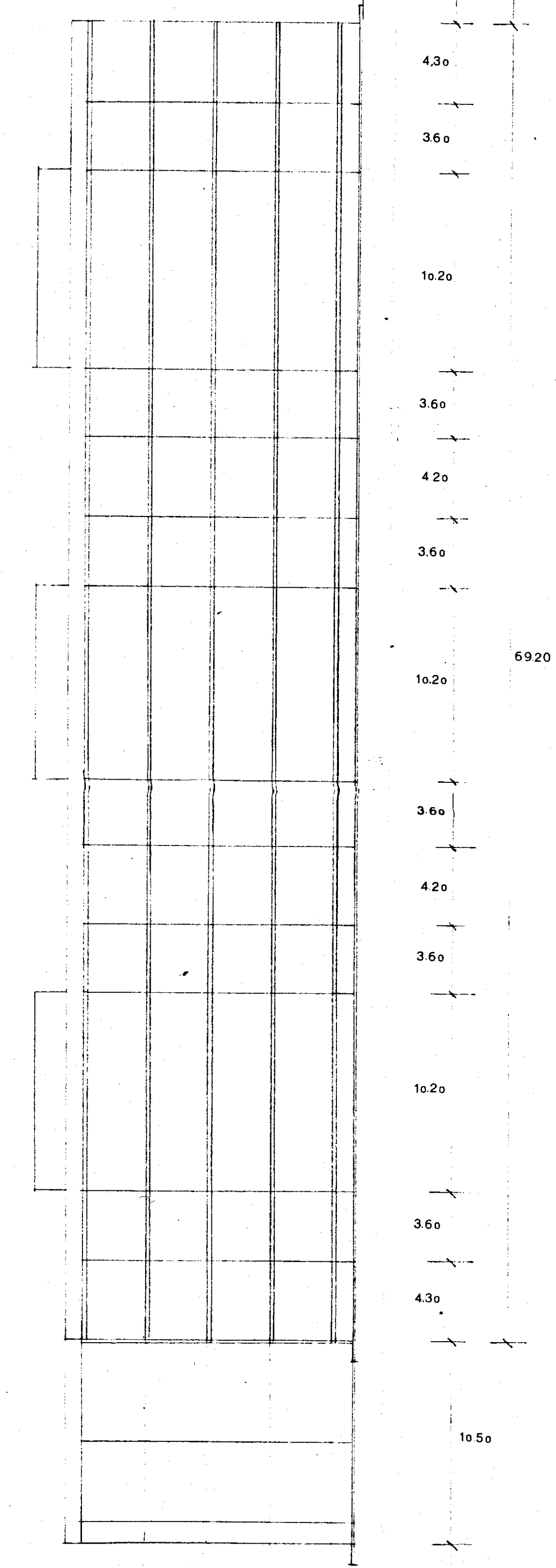
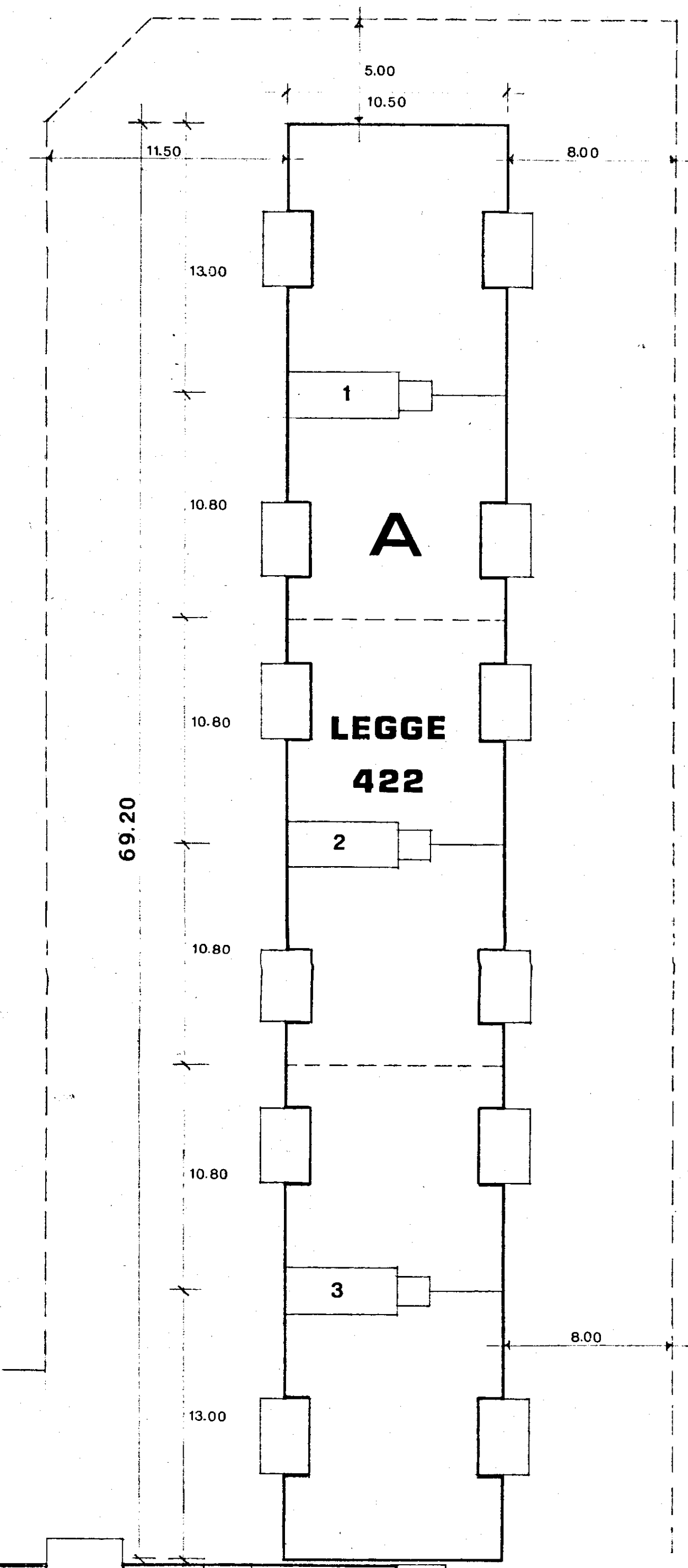
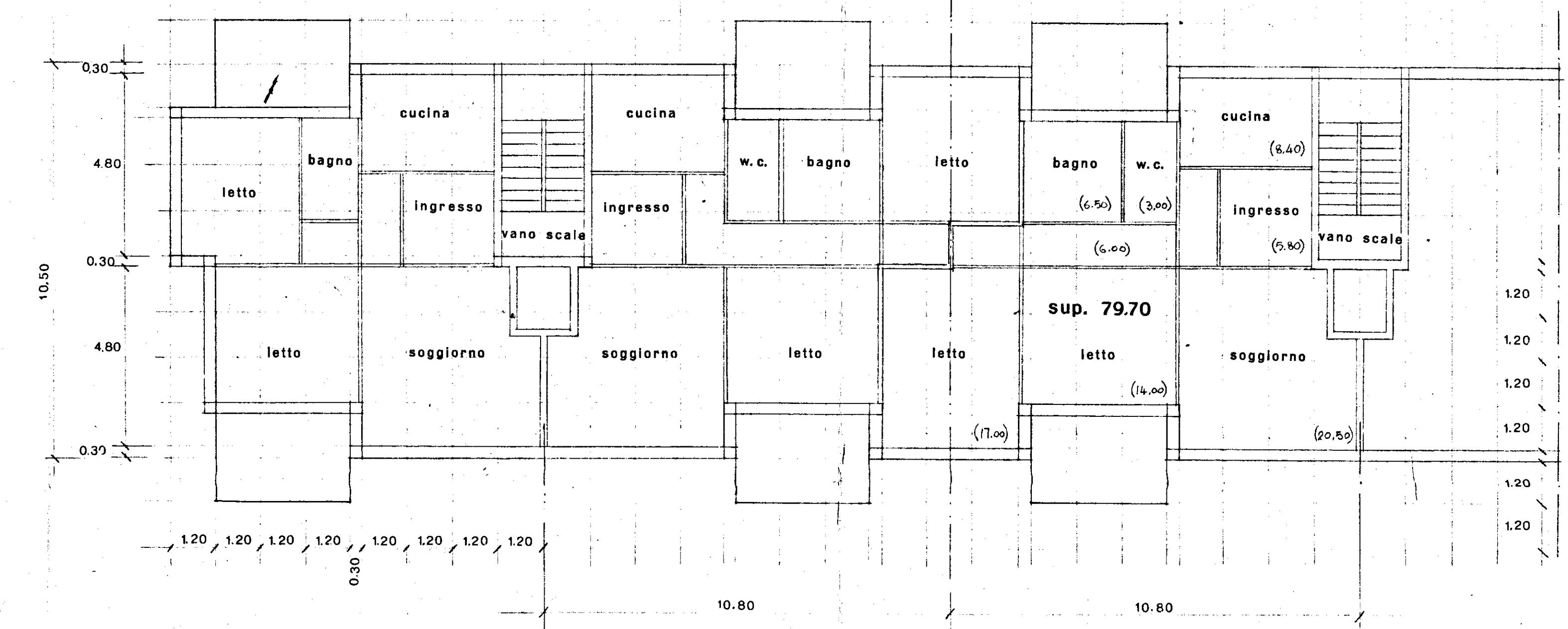


COPIA



DATI PLANOVOLUMETRICI

SUPERFICIE TOTALE AREA (8100x3250+6500x3000) =	MQ. 4542 ~
SUP. COPERTA CORPO A	MQ. 674,70
" " " B	MQ. 595,40
CUBATURA CORPO A	MC. 9450
" " " B	MC. 6330
TOTALE CUBATURA	MC. 17.780
" SUP. COPERTA	MQ. 127010 = (A+B)
ALTEZZA	ML. 14,00
VOLUME =	127010 x 14,00 = MC. 17.780
ARÉA DA DESTINARE A PARCHEGGIO	17.780 / 20 = MQ. 890
VANI CORPO A	N. 120
" " " B	N. 120
(A+B)	N. 240
ALLOGGI	N. 48

