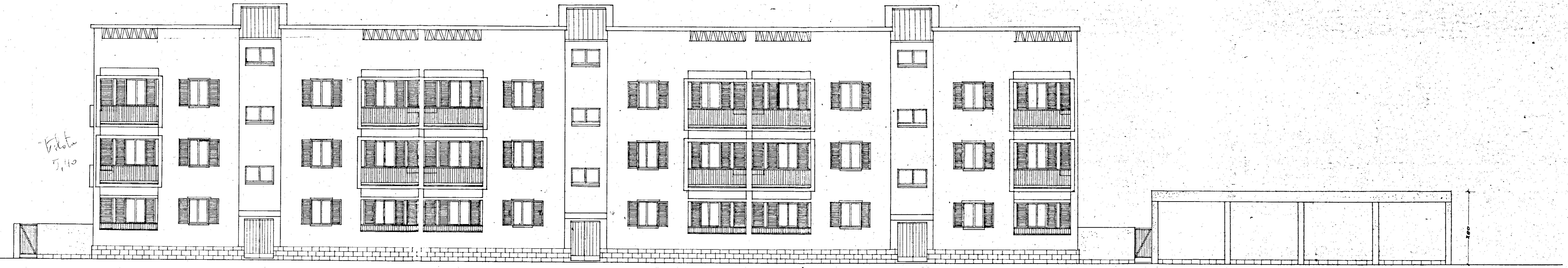
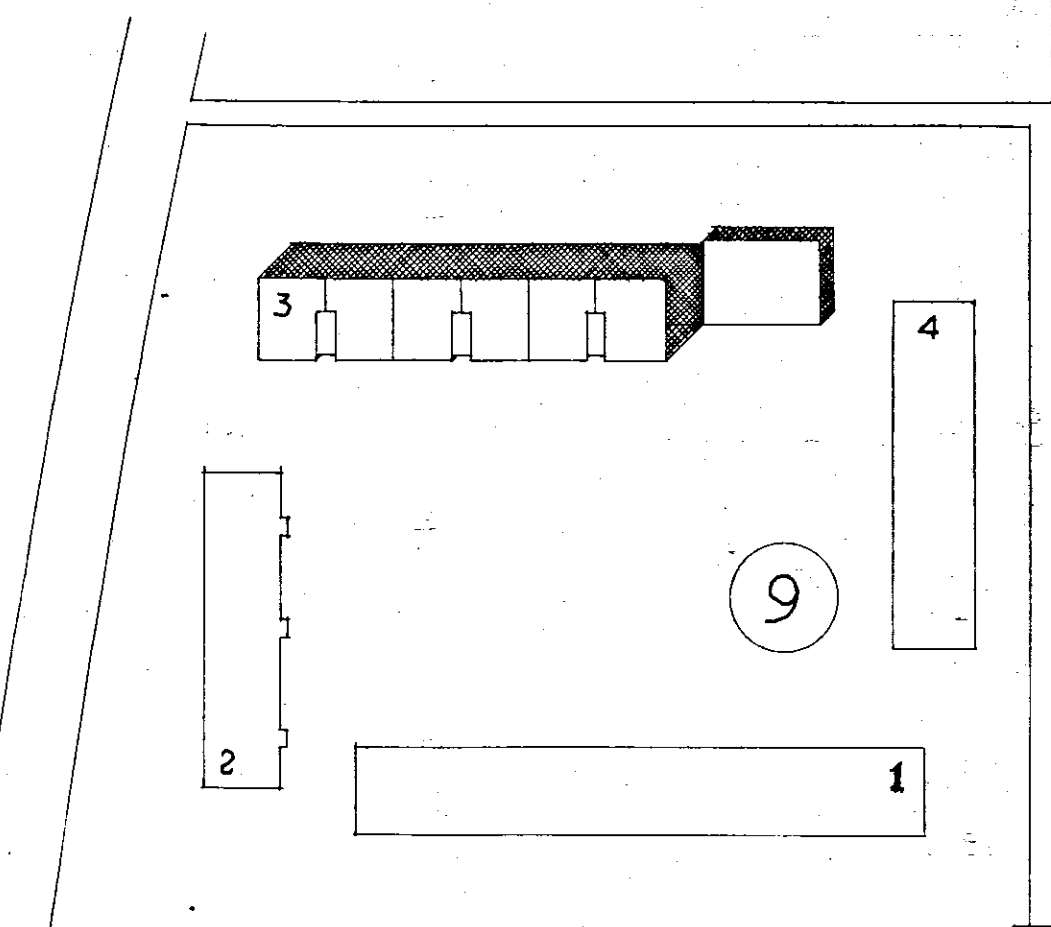
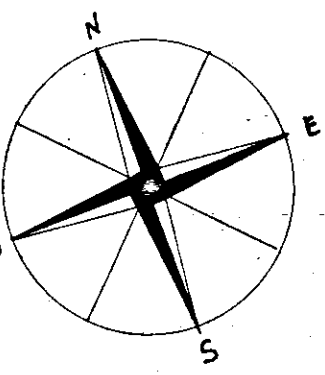


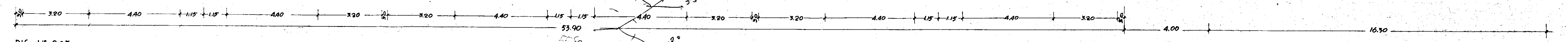
C. E. P. BRINDISI		
A 85	QUARTIERE COORDINATO RIONE "PARADISO"	
I.A.C.P. (408)	PROGETTO ESECUTIVO	DIS. 204-205
LOTTO N° 9	PROSPETTI	RAPP. 1:100
EDIFICIO N° 3	GRUPPO ARCH. AMENDOLA - ROMA	10-4-1958
20.5.1958		



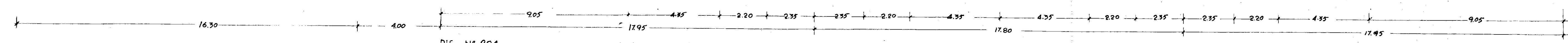
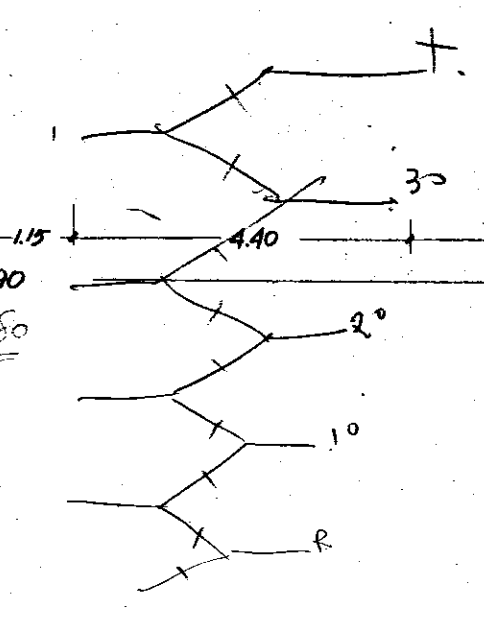
*Filato 5,110*

PROGETTISTI:  
 ARCH. GIUSEPPE AMENDOLA  
 MARIA TERESA SARNO  
 CECILIA VARETTI  
 LUIGI CREMONA  
 ALDO VILLANI

*Amendola*  
*Capo Gruppo*  
*Maria Teresa Sarno*  
*Cecilia Varetto*  
*Luigi Cremona*  
*Aldo Villani*



DIS. N° 205  
 PROSPETTO Δ SUD-OVEST  
 RAPP. 1:100



DIS. N° 204  
 PROSPETTO Δ NORD-EST  
 RAPP. 1:100

*10,70*  
*11,90*  
*18,60*

