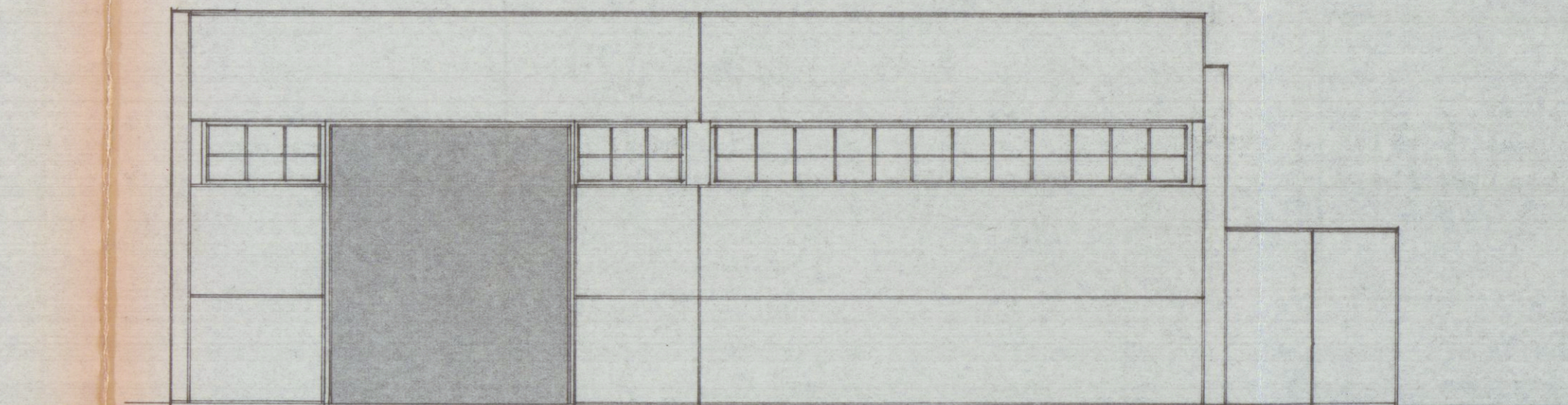
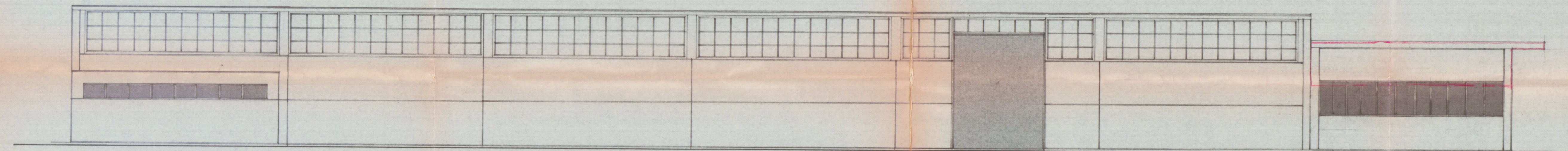


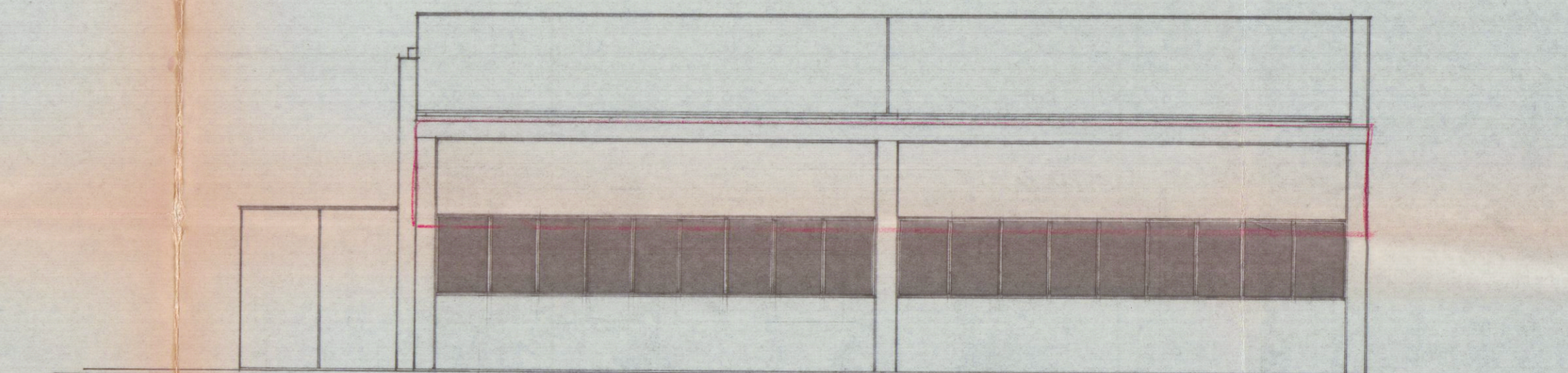
PROSPETTO EST



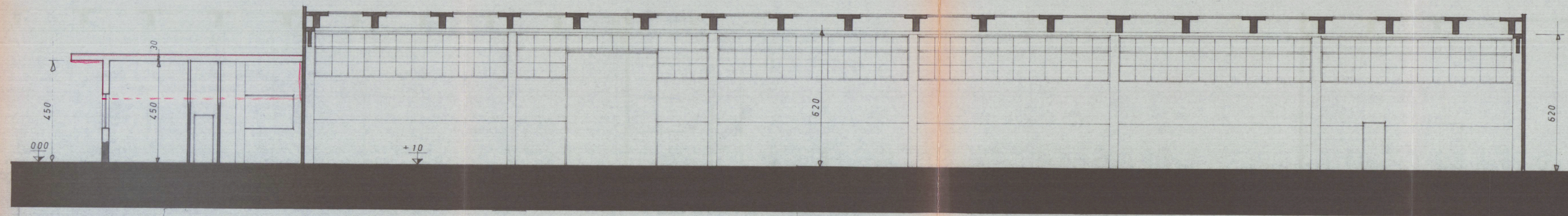
PROSPETTO NORD



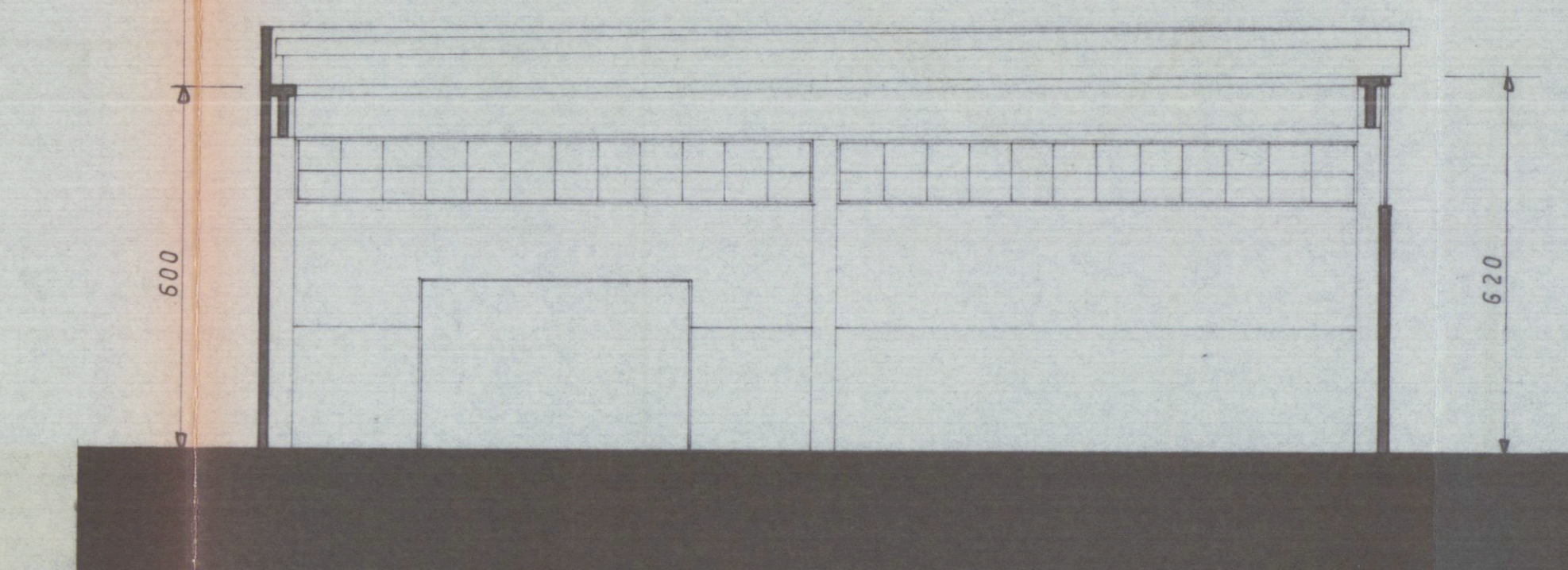
PROSPETTO OVEST



PROSPETTO SUD



SEZIONE A - A'



SEZIONE B - B'



2 VARIANTE

VARIANTE ~~1~~ A PROGETTO

APPROVATO IN DATA 26/3/81 n° 93

STUDIO TECNICO PROFESSIONALE
Geom. RICCI G. FERRARINI U.
Associazione fra professionisti
Via Mazzini n. 15 Tel. 75145 CARPI (PR)

12 MAR 1981

COMMITTENTE	scala	data	prot.
Autocarrozzeria DEL CHIARO	1:100	26/3/81	
LAVORO	Tavola	F.V. n°	
Edificio industriale AUTOCARROZZERIA	PROSPETTI SEZIONI	3	
Centro Soccorso	Committente	Progettista	