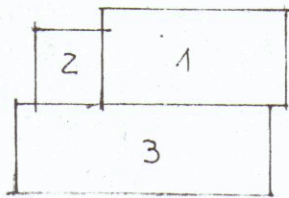


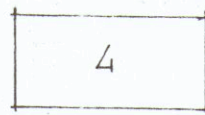
ESISTENTE

PIANO RIALZATO



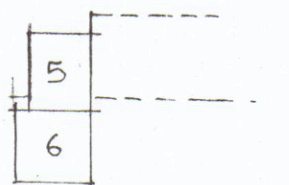
1 - $5.80 \times 12.40 = 71.92 \times h_{med} 300 = mc 215.76$
 2 - $3.60 \times 5.10 = 18.36 \times h_{med} 360 = mc 66.09$
 3 - $4.30 \times 16.50 = 70.95 \times h_{med} 360 = mc 255.42$
 TOTALE mq 160.51 mc 537.27

PIANO PRIMO



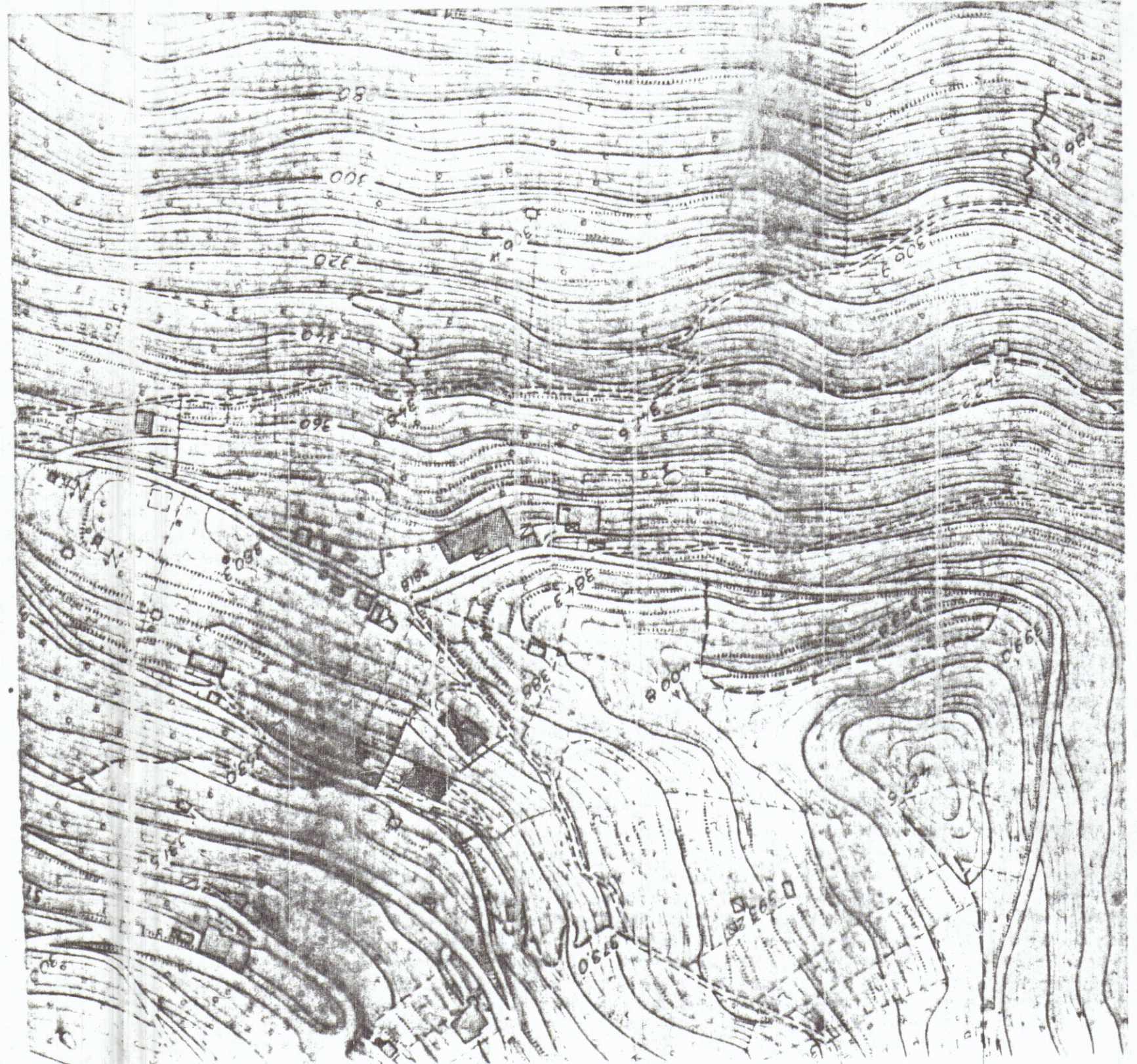
4 - $12.40 \times 5.80 = 71.92 \times h_{med} 330 = mc 237.33$
 Tot VOL ESIST MC 774.60

AMPLIAMENTO
PIANO PRIMO

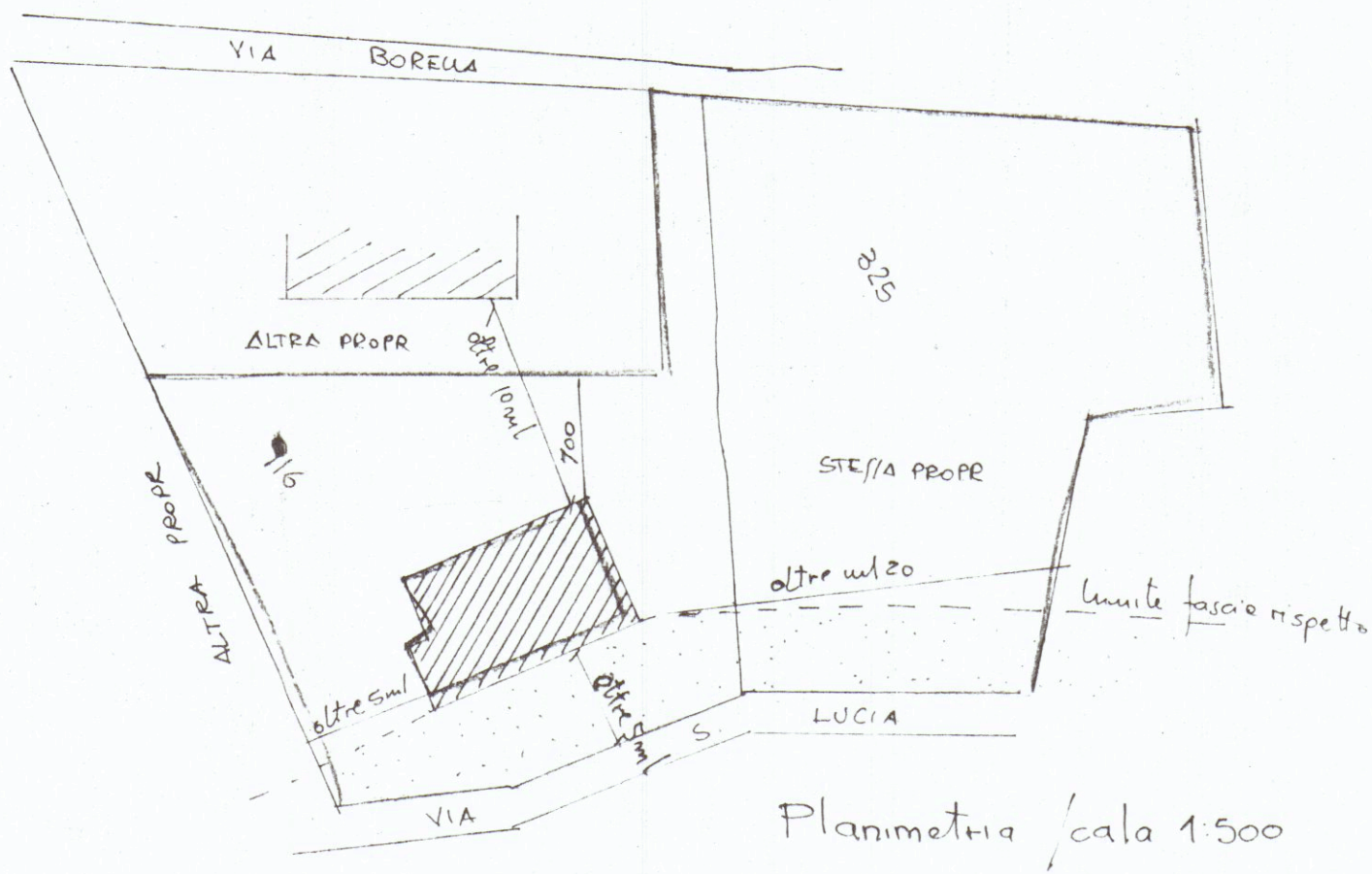


5 - $3.60 \times 5.10 = mq 18.36 \times h_{med} ul 300 = MC 55.08$
 6 - $4.70 \times 4.30 = mq 20.21 \times h_{med} ul 300 = MC 60.63$
 TOT. MQ 38.57 MC 115.71

VOLUME TOTALE $774.27 + 115.71 = MC 889.98$



Stralcio Aereofotogrammetrico



Planimetria / scala 1:500

ZONA DI ESPANSIONE

RAPPVOL 1mc/1mq
 dist conf. ul 3
 h. max ul 700



Stralcio Conforme a quello catastale



ARCHITETTI ASSOCIATI

Arch. Roberto Martelli
 Arch. Gianluca Barbieri



40100 - Marina di Carrara - Via Venezia, 1 - Tel. (0585) 700502-0585 733007 - Fax (0585) 12067

OGGETTO:		Ampliamento fabbricato di civile abitazione	
COMMITTENTE:		Rocchi Francesco	
UBICAZIONE:		Fontia, via Santa Lucia	
DETTAGLIO:		Planimetria Sanza	
SCALA	DATA	ESTREM CATASTALI	TAVOLA
1:100	01.08.95	Fg. 48 mapp. 325-916	1
RIFERIMENTI:		prat	